



CONFERENCE: Nov. 15-18, 2021
TRADE SHOW: Nov. 16-19, 2021

IAAPA.org/IAAPAE expo



@IAAPAHQ | #IAAPAE expo

Bringing it Back to Basics: Lessons Learned from Resilient Theme Parks and Attractions

Linda Hung, FORREC Ltd.

Dennis Gilbert, JAK Leisure Company

Matthew Earnest, Entertainment + Culture Advisors (ECA)

**“THE INSIGHTS LEARNED THROUGH COVID”
PHYSICAL, EMOTIONAL AND TECHNOLOGY TRENDS
that may influence the themed entertainment industry.**



@IAAPAHQ | #IAAPAEspo



Top 5 Insights

From the perspective of:

FEASIBILITY - DESIGN - OPERATIONS



@IAAPAHQ | #IAAPAEspo



1. Pandemic Puppies

Owning animals benefit mental and physical health.



Can I bring my furry friend to the theme park?



2. Fitness and Wellness

Increased health consciousness has fueled the wellness industry

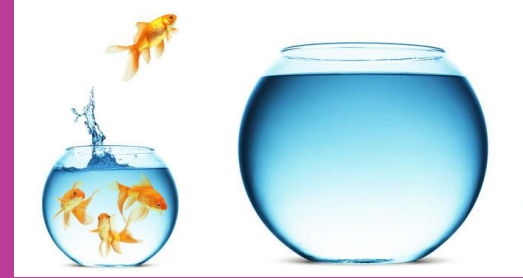


How will theme parks respond to health and wellness?

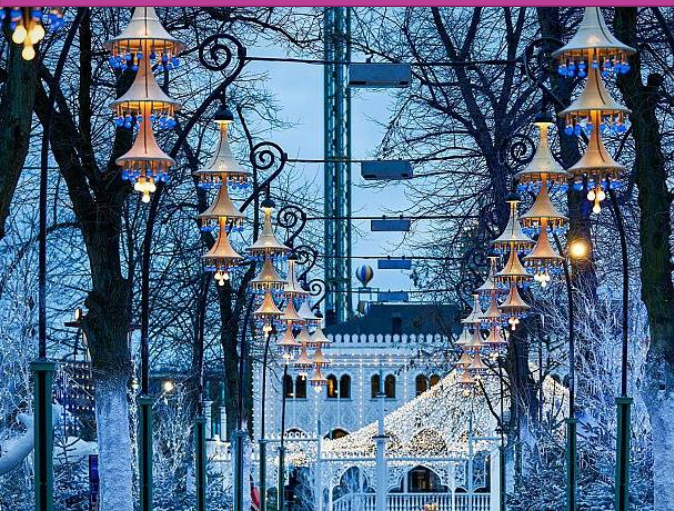


3. Paradigm Shifts

Increasing quality and efficiency



What are the big shifts in the TP/Attractions industry?

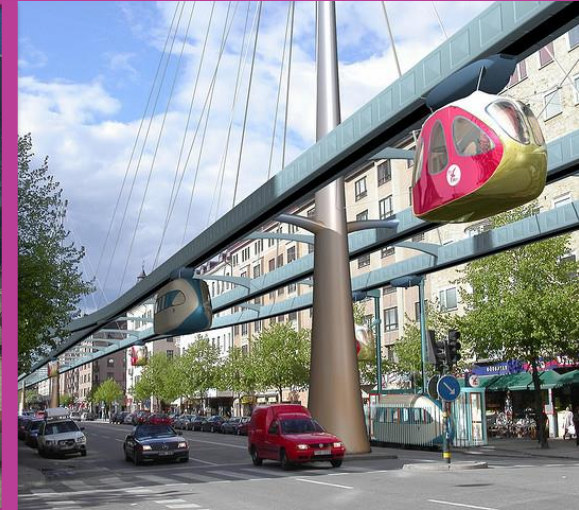


4. My Personal Space

Balancing “We” and “Me”



Will there be a lasting impact on personal space?

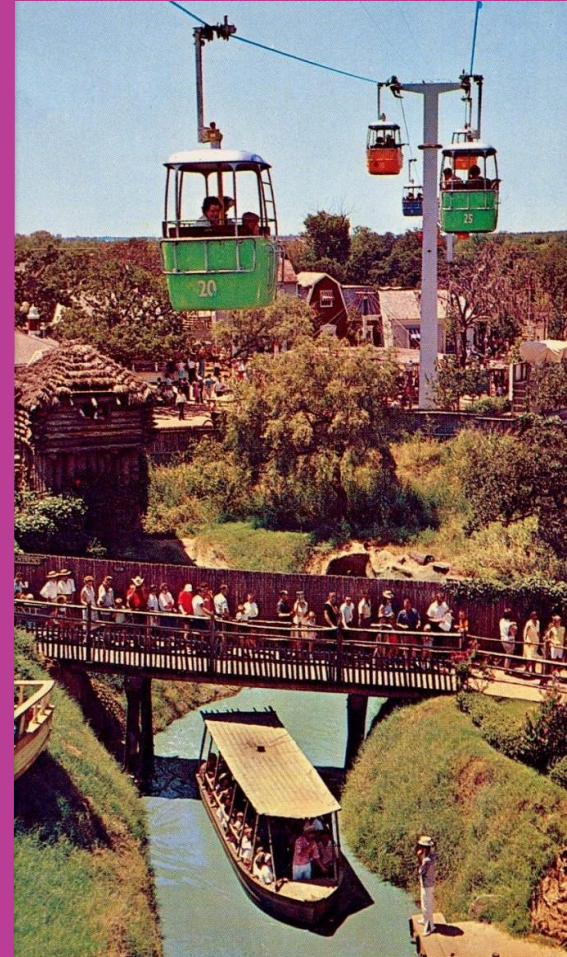


5. From Survival to Revival

Making up for lost time and getting out there for experiences.



What opportunities have opened up?



THANK YOU



@IAAPAHQ | #IAAPAEspo

